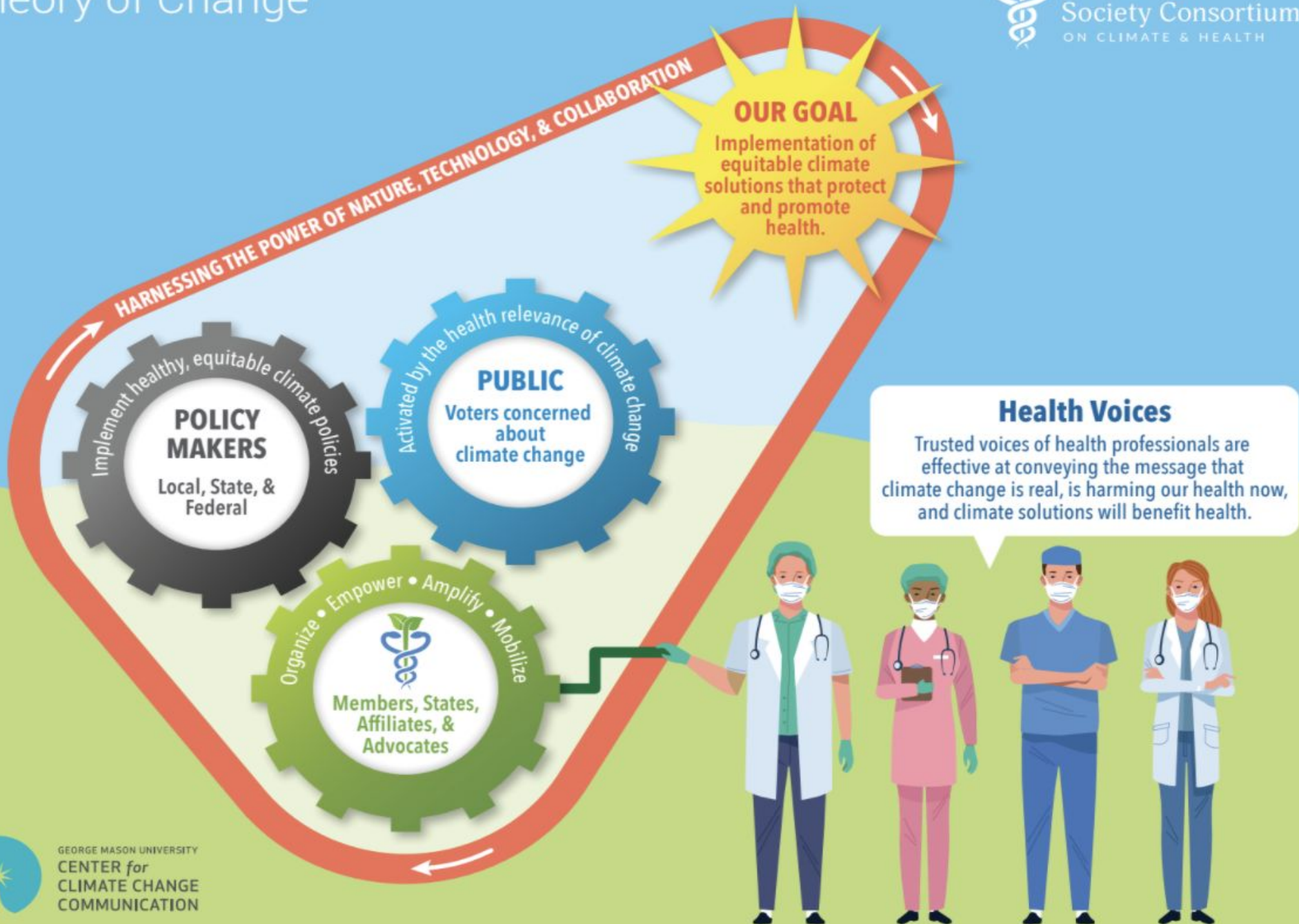




# *Find Your Climate Community*



# Theory of Change



# Ladder of Engagement

---

Follow, Subscribe, Learn

Sign-on, Respond, Share

Join, Engage

Own, Lead

Build,  
Recruit



## Medical Societies

- Recruit and engage society members
- Develop CME
- Become a part of leadership
- Introduce resolutions
- Author journal articles and opinion pieces
- Form a new committee

## State Groups

- Join or start a group
- Policy advocacy
- Educational efforts
- Work on campaigns
- Write Op-Eds
- Meeting with policy makers
- Recruit

## National Advocacy

- Contact lawmakers and candidates
- Attend our Annual Meeting
- Join our Rapid Response Media program
- Attend CME and webinars

## Community

- Advocate within your health system
- Patient education and outreach
- Share information with colleagues
- Give community presentations
- Share information on social media



## *Mid-career Ophthalmologist, Indiana*

- Reads monthly newsletter
- Participates in virtual action alerts
  - *petitions, sending emails to Congress*
- Attends Annual Meeting and participates in Hill Day



## *Early Career Family Physician, California*

- Joined the California State Group - Climate Health Now
- Writes Op-Eds
- Advocates within AAFP for more climate engagement



## *Mid-Career Nurse Practitioner, Georgia*

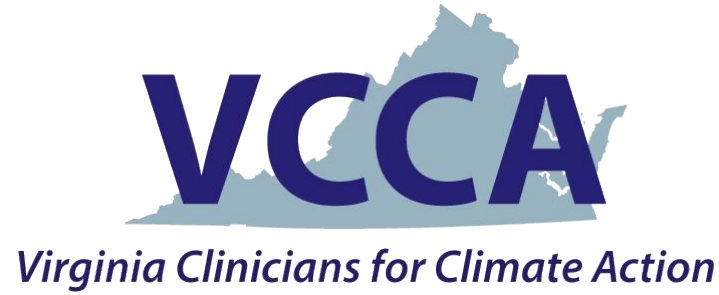
- Leads a Clinicians for Climate Action Group
- Coordinates with other state groups on national policy efforts
- Participates in Climate & Health Rapid Response Media team



## *Retired Pediatrician, Montana*

- Founded a Clinician for Climate Action Group
- National Spokesperson
- Created a new committee in AAP







*What are your next steps?*

*How can we support your efforts?*