



NEWSLETTER

FROM THE OFFICE OF THE
EXECUTIVE VICE PRESIDENT FOR RESEARCH

Volume 6, Issue 1

Spring 2014

INSIDE:

A Message from G. Michael Purdy	1
Status: Federal Research Budget	2
Biography: France A. Córdova	
An Update on Federal Guidance	3
Columbia University Human Research Protection Office	4
The 8th Annual IRB Educational Conference	4
Educational Outreach	4
New York Rescue Mission Donation	4
RASCAL Highlights	5
High Performance Computing—Rental Option	5
Thoughts on the NIH Public Access Policy	6
Medical Surveillance Program Offerings	7
Use of the P-Card and Ordering	7
A Primer on Export Controls (Chapter 2)	8
OPA Annual Social Networking Events	9
Postdoc Programs	9
Employee Recognition	10
New Faces	11
EVPR Holiday Party	12

evpr.columbia.edu

A Message from G. Michael Purdy, Executive Vice President for Research



On March 12, after months of unnecessary delay, the United States Senate confirmed France Córdova as the next Director of the National Science Foundation (NSF). Given NSF's importance to the funding of science and engineering at Columbia, this appointment is of considerable interest. We regularly receive substantially more than \$100M each year in research support from NSF.

As a current member of the National Science Board, Dr. Córdova knows NSF well. As the ex-President of Purdue University and ex-Chancellor of UC Riverside, she is an experienced and accomplished University administrator, well aware of the profound challenges that face University leadership in the present day. And, she is at a place in her career where I hope she will decide to fulfill her six-year term in its entirety; it takes time to build relationships with leaders on Capitol Hill, to win their trust and confidence and to build new budget initiatives that win support and bring new resources to the community.

She is an astrophysicist who served as the Chief Scientist of NASA in the mid-1990's, so she understands the role of large and expensive facilities in basic research. This is important at this moment in time when NSF's support of big facilities is under great pressure.

So, despite the extremely disappointing FY 2015 Administration budget request that was published in early March (confined by legislated spending caps), I remain optimistic that in a year or two we can return to a growth curve and begin to win back some of the budgetary ground that we have lost in 2013 and 2014.

Without doubt we at Columbia will be doing everything we can to help Dr. Córdova build the support she will need across both the Administration and Congress to build back the nation's investment in University-based research and reverse the damaging losses that we have recently experienced.

Federal Research Budget

In January, the President signed into law an omnibus appropriations bill that funds all the federal R&D agencies for the balance of FY 2014. The funding for FY 2014, in most cases, puts the R&D agencies back above the reductions required last spring as part of the FY 2013 sequester.

The omnibus bill includes \$29.9 billion for the NIH, \$1 billion above the FY 2013 level. This funding will continue support for basic biomedical research and translational research through programs, such as the Clinical and Translational Science Awards (CTSA) and Institutional Development Awards (IDeA) to support scientists as they conduct research to discover cures. NSF research has been increased almost 5% above last year. NASA science is up 8% from FY 2013 and NOAA's research budget is up by nearly 13% from last year though climate research at NOAA was sharply reduced. DoE R&D will rise to \$11.8 billion in FY 2014, a 20.4% rise above sequestration levels and a 9.3% increase above FY 2012.



We expect the Administration to release its proposed budget for FY 2015 soon. Under the budget agreement reached in December, total discretionary spending for FY 2015 will increase ever so slightly above the FY 2014 levels. The White

House has indicated the President's budget will have a \$56 billion investment package entitled, "Opportunity, Growth, and Security Initiative". It will also eliminate the remaining non-defense sequestration cuts in place for FY 2015. On February 14, the Administration also released a plan to strengthen the nation's climate resiliency. Included in this will be a \$1 billion climate resiliency fund that will be used to: invest in research to collect better data and information; help communities plan and prepare for the impact of climate change; and fund breakthrough technologies and resilient infrastructure.

Hearings in the Congress are being scheduled to examine the President's budget and to take testimony from the various interest groups concerned about discretionary funding for both domestic and defense spending programs. We do anticipate, because the budget agreement set spending limits for both FY 2014 and FY 2015, that the appropriations process for FY 2015 will be able to move forward more quickly than it has in recent years. There are indications that the House may be ready to start taking up some specific appropriations bills as early as May or June.

Biography: France A. Córdoba

From <http://www.nsf.gov/nsb/members/bio.jsp?pers=24758>

Astrophysics and Astronomy

B.A., Stanford University, 1969

Ph.D., California Institute of Technology, 1979



Prior to becoming the Director of National Science Foundation, France A. Córdoba served as the eleventh President of Purdue University from 2007—2014. She was installed on January 23, 2012 to a three-year term as Chair of the Smithsonian Institution's governing board, The Board of Regents. She had been appointed to The Board of Regents for a term of six years by a Joint Resolution of Congress in 2009.

Prior to joining Purdue, Dr. Córdoba served as Chancellor at the University of California (UC) Riverside from 2002 to 2007, where she was also a Distinguished Professor of Physics and Astronomy. An internationally recognized astrophysicist, Dr. Córdoba also served as professor of Physics and Vice-Chancellor for Research at UC Santa Barbara. Before joining UC Santa Barbara in 1996, she was Chief Scientist at NASA from 1993 to 1996, serving as the primary scientific advisor to the NASA administrator and the principal interface between NASA headquarters and the broader scientific community.

Dr. Córdoba headed the Department of Astronomy and Astrophysics at Pennsylvania State University from 1989 to 1993. She was a member of the staff of the Space Astronomy and Astrophysics Group at the Los Alamos National Laboratory from 1979 to 1989, where she also served as Deputy Group Leader.

Dr. Córdoba's scientific career contributions have been in the areas of observational and experimental astrophysics,

Biography: France A. Cordova (cont.)

multi-spectral research on x-ray and gamma ray sources, and space-borne instrumentation. She has published more than 150 scientific papers, and has a current experiment flying on the European Space Agency's X-Ray Multi-Mirror Mission. She is the winner of NASA's highest honor, the Distinguished Service Medal, and was recognized as a 2000 Kilby Laureate, for "contributions to society through science, technology, innovation, invention, and education."

She was elected to the American Academy of Arts & Sciences, and is a National Associate of the National Academies. She is also a fellow of the American Association for the Advancement of Science (AAAS) and the Association for Women In Science (AWIS).

The oldest of twelve children, Córdova attended Stanford University, where she graduated cum laude with a bachelor's degree in English, and, among other activities, conducted anthropological field work in a Zapotec Indian pueblo in Oaxaca, Mexico. She earned a Ph.D. in Physics from the California Institute of Technology in 1979. In 1997, she was awarded an honorary doctorate by Loyola Marymount University, Los Angeles.

Córdova is married to Christian J. Foster, a science educator. They have two children.

Photo credit: <http://www.makers.com/france-c%3%B3rdova>

An Update on OmniGuidance

On December 26, 2013, the federal Office of Management and Budget published *Administrative Requirements, Cost Principles, and Audit Requirements for Federal Awards*, a 759-page final guidance. The "OmniGuidance" consolidates, streamlines and supersedes eight existing circulars, including Circulars A-21, A-110 and A-133. The new regulations will not take effect until December 26, 2014 and in the interim we expect OMB to issue further FAQs, and for individual funding agencies to promulgate their own regulations. Until that information is forthcoming, it is difficult to assess the scope and effect of all of the changes.

Although analysis of the OmniGuidance will take some time, initial review reveals certain provisions that may be

of interest to investigators (again, *these provisions are not yet in effect, but will be implemented in the next year*):

- Agencies must generally make funding opportunities available for applications for at least 60 calendar days and must use common data elements.
- Voluntary committed cost sharing is not expected, may not be used as a factor during merit reviews of proposals and may only be required when set by regulations or specified in the RFP.
- Direct charging of computing devices is allowable for certain devices that are essential and allocable to the performance of a federal award, not just those that are solely dedicated to an award.
- As appropriate, the agency must require the recipient to relate financial data to performance accomplishments and recipient must provide cost information to demonstrate cost effectiveness. This reflects a new focus on performance for certain awards.
- Administrative costs may be treated as direct costs of a study if they are integral to the study, identifiable and approved.
- A non-federal entity's negotiated indirect cost rate must be accepted by all agencies, unless a different rate is required by statute or regulation or approved by the agency head with written justification.
- Family-friendly policies are encouraged by, for example, allowing temporary dependent care costs that result directly from travel to conferences.

To coordinate implementation of the changes required by the new regulations, the University has established the OmniGuidance Task Force, with representatives from Sponsored Projects Administration, Sponsored Projects Finance, Research Compliance and Training, the Controller's Office, Research Policy and Indirect Costs, the Office of General Counsel and the Office of the Executive Vice President for Research. The Task Force will communicate regularly with the research community on issues that affect research at Columbia.



Introducing: The Columbia University Human Research Protection Office!



The administrative office that supports the University's Institutional Review Boards (IRBs) has adopted a new name that clearly reflects its mission of protecting human research participants: the Columbia University Human Research Protection Office. The organizational structure of the Office, which has locations on the Medical Center and Morningside campuses and is managed by the IRB Executive Director, has not changed. The new name reflects the scope of the Office which extends beyond the review boards themselves to the functions and goals of the University's Human Research Protection Program (HRPP).

The HRPP is charged with the responsibility of ensuring that all human subjects research conducted by Columbia faculty, employees and students is performed ethically and in a manner that promotes the protection of human subjects in research. Protections for human participants in all such research must not only be in compliance with institutional policy, state law and federal regulations, but must also meet or exceed the standards of accreditation as set forth by the Association for Accreditation of Human Research Protection Programs (AAHRPP). The Columbia HRPP covers all entities, offices and individuals engaged in and/or responsible for the review and conduct of human research at Columbia and NewYork-Presbyterian Hospital at Columbia. Mike Purdy, the Executive Vice President for Research, has overall responsibility for the HRPP.

The Columbia HRPP is managed by the Human Research Protection Office and earned reaccreditation by AAHRPP in December 2013. This achievement is the result of an intensive reaccreditation process that was capped by a four-day site visit involving four site visitors and more than 120 interviews of institutional officials, IRB members, IRB administrative staff, representatives of research administrative offices and researchers. Reaccreditation reflects the continued high quality of the University's program for protecting human research participants.

Educational Outreach – *schedule now!*

The Human Research Protection Office is now scheduling educational sessions for the spring semester with individual departments, centers, institutes and other research units. The purpose of these sessions is to present targeted information relative to the type of research that is conducted by the unit, and answer questions from researchers, in order to facilitate complete submissions to the IRB. Visits may be initiated by sending an email to askIRB@columbia.edu for Morningside and Lamont-Doherty locations, and irboffice@columbia.edu for Columbia University Medical Center locations.

New York Rescue Mission Donation

A collective effort by the staff of the Human Research Protection Office resulted in a donation in December 2013 to the New York Rescue Mission that will provide 102 meals to individuals in need. Thank you to Joyce Plaza for spearheading this recent charitable effort by the staff!

8th Annual CU IRB Educational Conference May 12, 2014

The Human Research Protection Office is pleased to announce that the 8th Annual Columbia University IRB Educational Conference has been scheduled for Monday, May 12th. The conference, which is free of charge to all Columbia faculty, staff and students, will be held in the Roone Arledge Auditorium in Lerner Hall on the Morningside Campus.

This year's program will focus on the protection of human subjects in research involving emerging technologies, including sessions on genomics, future use of biological samples and honest broker systems to maximize use of existing specimens and data, central IRBs and data security. We are pleased to once again have nationally recognized researchers, ethicists and IRB professionals as conference faculty who will provide increased awareness of, and practical approaches for addressing challenges in these areas.

Please save the date for this important event. The complete conference agenda and online registration form will soon be available on the IRB website.



2.0 IACUC Rascal Module

We will soon be issuing a new IACUC protocol form in Rascal. The new form will be less narrative and more directive than the current form and will elicit the information needed by the IACUC through a series of specific questions. We believe that the new form will be easier for the research community to use, will improve the consistency of IACUC reviews and will positively impact the turnaround times for protocols by eliminating much of the back and forth that currently occurs simply to obtain basic information.

We expect the new protocol form to go live on May 18, 2014, after which all protocols must be completed using the new form. Any protocol that has been submitted prior to May 18, but has not yet been approved by that date will have to be resubmitted using the new form. It is therefore very important to understand that if you have a protocol expiring any time before June 30, or if you intend to submit a new protocol during that period, you should submit your protocol early. Therefore, please note the following important dates:

April 1: submit all triennial review protocols and protocol continuation data sheets for D or E studies expiring before

June 30 and all new protocols for D or E studies that you want to have approved in April or early May.

April 15: submit all triennial review protocols and protocol continuation data sheets for B or C studies expiring in April or early May and all new protocols for B or C studies that you want to have approved prior to June 30.

The IACUC staff will hold several sessions for the research community in late April or early May to demonstrate the new protocol form, and representatives of the IACUC and Rascal will be available for help sessions after the go live date.

NOTE: If your protocol was submitted but not approved prior to May 18, Rascal will transfer the common information in the protocol to the new form (e.g. title, personnel) and will provide a snapshot of the existing protocol. The information in the old form will not be lost. You will have to complete the new form with the new questions. We urge you to work with the Office of the IACUC to ensure that your protocol is approved prior to May 18, 2014.

Please feel free to call Dr. MJ Shepherd, Director of the Office of the IACUC, at (212) 342-1142 if you have any questions about the foregoing process.

Upgrade to the Rascal IRB Module!

The Rascal IRB module is undergoing a major revision to improve ease of use and facilitate efficient review of submissions. During the first phase of the project, screens that are used by researchers to create submissions are being modified and expanded to solicit all information that is necessary for IRB determinations. The second phase of the project will upgrade administrative functionality. Input was sought from researchers and representatives of University research administrative offices to ensure that enhancements will address identified areas of inefficiency and incorporate constructive recommendations. IRB officers are working closely with the Rascal team on the IRB upgrade, which will be released in two parts, beginning with the researcher-facing components. Suggestions continue to be welcomed and should be provided to Alan Teller at at2059@columbia.edu.

High Performance Computing—Rental Option

It is now possible to rent single-user shares on the Yeti HPC cluster for a period of one year. Specifics of this option, including how to order, can be found here:

<http://hpc.cc.columbia.edu/hpc-renter-service>

In addition, more information about the HPC service can be found at the following links:

CUIT HPC Service Catalog page:

<http://services.cuit.columbia.edu/high-performance-computing-hpc-cluster>

Yeti Cluster User Documentation:

<https://wikis.cuit.columbia.edu/confluence/display/rcs/Yeti+HPC+Cluster+User+Documentation>

Please feel free to contact the CUIT Research Computing Services team at rcs@columbia.edu with any questions you may have.

Thoughts on the NIH Public Access Policy

Stephanie F. Scott, M.S., CRA
Communications and Outreach Director
Sponsored Projects Administration (SPA)



In the last seven months, I have learned a lot about the NIH Public Access Policy. As a reminder, “The [NIH Public Access Policy](#) ensures that the public has access to the published results of NIH-funded research. It requires scientists to submit final peer-reviewed journal manuscripts that arise from NIH funds to the digital archive PubMed Central *immediately upon acceptance for publication*. To help advance science and improve human health, the Policy requires that these papers are accessible to the public on PubMed Central no later than 12 months after publication.”

For non-competing continuation grant awards with a start date of July 1, 2013 or beyond, NIH began delaying the issuance of Notice of Grant Awards (NGAs) if publications in the progress reports were not in compliance with the Policy. Please note that to demonstrate compliance, a PubMed Central ID number (PMCID) is required and it must be obtained within three months of the publication date.

I have heard from frustrated researchers and administrators all trying to comply when submitting progress reports. There is too much information to absorb, too many acronyms to remember, too many training resources, too many electronic systems to learn, inconsistency in the way publishers assist authors, and way too many steps for an author to remember in order to comply. If I wanted to fuse all of our shared, and more often than not, frustrating experiences into one single lesson, it would be to say that compliance with the NIH Public Access Policy is all about **timing!** It is critical to start working on compliance immediately after you receive a notice of award by notifying all of the potential authors to the Policy and its implications and assigning responsibilities to track compliance. The next best time to ensure compliance with the Policy is when your manuscript is accepted for publication. Inform the

journal that your article is a result of a study funded by NIH and is therefore subject to the Policy. When communicating with the journal editors, get detailed clarification on what to expect from them and what is it that you as an author need to do to comply.

I want to take a moment to say that I feel your pain. It is very difficult to troubleshoot why a publication is considered ‘non-compliant,’ and to track down where it was left off in the process. Most importantly, when a publication is deemed non-compliant, there is no way to speed up the process of making it compliant. Retrospective compliance troubleshooting is a painfully complex and time consuming process.

I can offer some tips on how to *ensure compliance with NIH Public Access Policy*, and avoid delays in funding.

Upon NIH award acceptance:

1. **Communicate** with all potential authors who may publish as a result of your grant award that they must comply with the NIH Public Access policy. They should keep you informed of their manuscripts resulting from your award.
2. **Designate** someone (PI, author, staff member) to be the point of contact who ensures that the manuscript moves through the PMC submission process.
3. **Ensure** that all potential authors have MyNCBI accounts, linked to eRA Commons. For step-by-step MyNCBI guidance, go to <http://spa.columbia.edu/nih-public-access-policy>

During manuscript preparation:

1. **Review** the journal’s *Instructions to Authors* for any specific information related to the NIH Public Access Policy.
2. Make sure the journal knows the manuscript is funded with **NIH funds**.
3. **Clarify** with the journal whether they will deposit the final manuscript into PubMed Central (PMC) on your behalf or if you need to do this using the NIH Manuscript System (NIHMS). Identify the submission method: http://publicaccess.nih.gov/submit_process.htm
4. Learn what *steps* you need to take to complete this process, if you are responsible for uploading the manuscript into NIHMS: <http://nihms.nih.gov/help/> and <http://youtu.be/NROwOdAieG4>
5. **Initiate** the submission process **immediately** after your manuscript is accepted for publication. **Timing is very important in order to comply with the policy and avoid award delays!**

If you are an author but not the PI, notify the PI of the

Thoughts on the NIH Public Access Policy (cont'd)

grant, or a designated person, that you are working on a manuscript so that s/he can plan to follow its progress.

If you do run into trouble and have a non-compliant publication at the time of progress report submission, always check the accuracy of the information in your Bibliography in MyNCBI, then contact the journal to inquire about the next steps to take!

As always, you can contact me, or the Health Sciences Library at hs-library@columbia.edu, to point you in the right direction in preventing or solving non-complaint publications retroactively.

Medical Surveillance Program Offerings

The University's Bloodborne Pathogen (BBP) exposure control plan identifies procedures and job titles that are considered as being potentially at risk of exposure to bloodborne pathogens. These include laboratory research with human blood, tissues or otherwise potentially infectious material, treating student athletes with bleeding injuries, laundering of blood-soaked items or transporting of regulated medical waste. In addition to the long-standing medical surveillance program available to personnel (staff and faculty) at Columbia University Medical Center (CUMC), personnel at risk in the Biology, Psychology, SEAS and Athletics Departments are now able to access medical surveillance services, including hepatitis B virus vaccination, through an agreement with New York Presbyterian Hospital Workforce Health and Safety. However, to meet OSHA regulations, personnel in the aforementioned departments must actively accept or decline this offer of

vaccination. Those with no prior vaccination who do not wish to receive the vaccine must elect a "Declination" option acknowledging that they are aware of the vaccine's benefits and that they may choose to be vaccinated, at no cost, at any time in the future. Program enrollment is completed through a RASCAL (www.rascal.columbia.edu) Hepatitis B Vaccine Notification Form in the Hazardous Materials menu.

Use of the P-card and Ordering Radioactive Materials

Purchasing policy prohibits the use of a P-Card for procurement of restricted items such as radioactive materials (http://policylibrary.columbia.edu/files/policylib/imce_shared/PCard_Policy_Revised_February_2014_Final.pdf). This prohibition reflects the requirement that all purchases of radioactive materials receive prior approval by Radiation Safety as outlined in the Radiation Safety Manual (<http://www.ehs.columbia.edu/RadiationSafetyManual.pdf>). P-card purchases cannot be reviewed for prior approval by Radiation Safety.

Please ensure all purchase requests for radioactive materials are routed through the Accounting and Reporting at Columbia (ARC) system.

If you have any questions on this matter, please contact Radiation Safety at 212-305-0303.



COLUMBIA | RESEARCH
Environmental Health and Safety

A Primer on Export Controls (Chapter 2): Is my export excluded from export controls?



Office of Research Compliance and Training

In the Winter 2014 EVPR Newsletter, we defined what an “export” is for purposes of understanding U.S. export control regulations. In this issue, we look at the question of whether your export is subject to these regulations. Both the International Traffic in Arms Regulations (“ITAR”) and the Export Administration Regulations (“EAR”) exclude certain categories of exports from the regulations. If your export falls within one of these excluded categories, then it is not subject to the regulations.

The three exclusions that most commonly apply to Columbia University activities are the publically available information exclusion, the fundamental research exclusion, and the educational information exclusion. Although these exclusions under the ITAR and EAR differ in detail and scope, it is possible to make some generalities. Each is discussed below.

Publically Available Information

Publically available information is information that is accessible to the general public. It includes the following: information available in written or electronic publications (e.g., books, journals); information available in public libraries; information included in public patents; information released in open conferences, meetings, and exhibitions. Both the ITAR and EAR exclude publically available information from the regulations. However, be forewarned! The government agencies that administer the export control regulations have cautioned that just because information is available on the Internet does not mean that the information *should* be available on the Internet. Therefore, agencies may not consider such information to be publically available and excluded from the regulations.

Fundamental Research

Both the ITAR and EAR also exclude fundamental research, which is defined as basic and applied research in science and engineering, the results of which are ordinarily

published and shared broadly within the scientific community. Much of the information generated by Columbia researchers falls within the fundamental research exclusion (“FRE”). However, the FRE is not a blank check – it has limitations. First, the FRE applies to *research results* only. It does not apply to proprietary information used in the research, nor does it apply to prototypes or other items resulting from the research, nor to instruction and training. Second, if foreign nationals are restricted from participating in the research, the FRE does not apply. Third, if the researchers are restricted from publishing the research results or if publications must be submitted to the sponsor for pre-publication approval (with narrow exceptions to protect confidential information and patent rights), the FRE does not apply. Therefore, if publication or participation restrictions are present, the FRE does not apply and the research results may be subject to the export control regulations.

Educational Information

Finally, the EAR excludes educational information released by instruction in catalog courses and associated teaching laboratories. Note that the exclusion only applies to information and that the information must be released in a course listed in Columbia’s catalog. Although the ITAR also contains an exclusion for information released in courses, it is narrower in scope than EAR’s exclusion.

All three of the exclusions discussed above help ensure that access to Columbia’s research is open and available to all. However, as noted above, these exclusions have limitations and determining whether information falls within one of these exclusions is not always easy. In some instances, export controls apply to equipment, software, and information on campus. When this happens, it is important to determine what export restrictions apply. To do this, we must “classify” the items under the applicable export control regulation, which is a highly technical process. This classification process is a key element of any export control analysis and will be the subject of the next article in this series.

If you have questions about export controls as they relate to your research or would like additional training on export controls, please contact Columbia’s Research Export

A Primer on Export Controls Postdoc Programming (Chapter 2): Is my export excluded from export controls? (cont.)

Control Officer, Michelle Avallone, at 212-851-9822 or research-compliance@columbia.edu. You may also visit the Research Compliance and Training website for additional information relating to export controls: http://www.columbia.edu/cu/compliance/docs/international_research/index.html.

Postdoctoral Affairs Annual Social Events

The Office of Postdoctoral Affairs (OPA) recently held two successful social events for Columbia Postdocs.

The Office's Postdocs with Kids Holiday Party was complete with face-painting, balloon animals, a cotton-candy machine, singing, dancing, and a magic show-- Our Postdocs and their children definitely had a great time to round out the year!

OPA also hosted its annual Postdoc Ski Trip to Hunter Mountain in February.

This semester, OPA has collaborated with various departments and institutions across Columbia to present an array of programming for Postdocs.

1. "Doing the Right Thing: What Every Postdoc Should Know about Research Misconduct" and "What Every Postdoc Should Know about Conflict of Interest" were two workshops that were produced in collaboration with the Office of Research Compliance and Training for both the Morningside and Medical Center Campuses.

2. OPA is conducting a three-workshop series, together with the Health Sciences Library, featuring professional development for Postdocs. The first workshop of the series was titled, "Tracking Your Scholarly Impact". The next two workshops will take place later on this semester.

3. OPA and the Graduate Career Center are cosponsoring a speaker, Tom Magaldi, Director of Science Alliances to discuss "The Humble PhD and Postdoc: Avoid Common Career Mistakes by Accepting Your Circumstances and Adapting."

4. OPA will partner with doctoral candidates from Teachers College to produce communication and listening workshops for non-native English speakers throughout the semester.

Moreover, Dr. Susan Essock, the Edna L. Edison Professor of Psychiatry and Director of the Division of Mental Health Services & Policy Research in the Department of Psychiatry, to will speak later this month with our Postdocs about negotiation skills in a talk entitled, "How to Get a Seat at the Table."

For details on all OPA events and offerings, please visit our website at: postdocs.columbia.edu



 COLUMBIA|RESEARCH
Office of Postdoctoral Affairs

Employee Recognition

Lauren Kelly, Manager of Environmental Health and Safety's Hazardous Materials Program, has received the *Exceptional Service Award* from Columbia University Public Safety. The award was presented on February 20, 2014 at the Annual Promotion, Awards & Recognition Ceremony in recognition for Lauren's commitment to assisting Public Safety in its emergency preparedness programs through an ongoing series of training programs and interactions. Lauren's collaboration with Patrick Danville, Public Safety Assistant Director of Training and Development, was also featured as a presentation at the 2013 Annual College and University Hazardous Waste Conference, and serves as a model for peer institutions in campus emergency preparedness.

Louis Marshall has been promoted to Awards Analyst for the SPA Morningside office. Louis has spent the last three years assisting both Pre-Award and Post Award SPA operations as well as working on special projects in his previous position as a data coordinator. Louis looks forward to defining and expanding this newly created position.

Amanda Norton was recently promoted to Senior Project Officer, after serving as Project Officer since April 2013. Amanda began her career at the University of Texas at Austin, where she worked in Sponsored Projects for 2 ½ years. Before joining the Columbia community, she worked for 2 years in Research Administration at Duke University Medical Center. At Columbia, she was a Financial Analyst before moving into the Project Officer role.

Congratulations to **Anita Ou**, who was recently promoted to Assistant Manager of CUMC IRB-2. Anita has been with the CUMC office since November 2011 and is responsible for processing submissions to IRB-2, as well as preparing for IRB-2 meetings and drafting meeting minutes. Through her timely processing of submissions, contributions to office-wide initiatives, and demonstrated ability to manage IRB-2 functions in the IRB-2 manager's absence, Anita has earned this promotion.

Congratulations to **Rafael Santos**, IRB Specialist, who recently earned the Certified IRB Professional certification! Rafael has been a member of the Morningside office since March 2012, and his work regularly reflects the knowledge that enabled him to pass the CIP exam.

Challace Pahlevan, Manager of CUMC IRB -I, recently welcomed daughter **Ara Maeve**. Congratulations to Challace and her family on this new, wonderful addition!



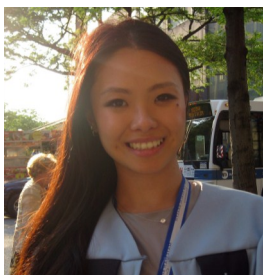
Lauren Kelly



Louis Marshall



Amanda Norton



Anita Ou



Challace Pahlevan



Ara Maeve

New Faces

Michelle Benson has joined the office of Research Compliance and Training as the Research Integrity Program Specialist. Before coming to Columbia, Michelle was an adjunct faculty member at colleges in New Jersey, teaching chemistry to undergraduates and nursing students. Michelle earned her Ph.D. in materials chemistry at the University of Wisconsin-Madison, where she also worked for the Wisconsin Alumni Research Foundation, participating in technology transfer, promoting collaboration, and educating about research integrity.

Dominic Mathurin has joined the Clinical Trials Office (CTO) as a Clinical Research Recruitment Coordinator working on overseeing CTO's applications, with a focus on our newly minted clinical research subject recruitment tool. Dominic earned his M.A. in Psychology at Teachers College, and brings with him a knowledge of research and website management gained from his work in the department of Psychiatry. Previously, Dominic had served as a research worker under Dr. Richard Sloan, co-creating Dr. Sloan's behavioral medicine website and managing recruitment of his studies.

Madhavi Nambiar has joined Sponsored Projects Administration (SPA) - CUMC as Senior Project Officer. Prior to joining SPA, she held the position of Deputy Director of Programs at The Inner Resilience Program, a non-profit organization in New York City. Madhavi has more than 7 years of experience in federal contracts and grants management from UCLA Semel Institute for Neuroscience and Human Behavior/ Resnick Neuropsychiatric Hospital. She holds a Ph.D. in Mythological Studies/ Depth Psychology from Pacifica Graduate Institute.

Lilian A. Oling is a Senior Project Officer in SPA. She has worked at the Columbia University Center for High Throughput Minimally-Invasive Radiation Biodosimetry as a Project Manager. She enjoys that her position is challenging and fast paced and requires constant learning and interacting with the University community. In her free time, she enjoys hiking and yoga.



Michelle Benson



Dominic Mathurin



Madhavi Nambiar



Lilian Oling

**COLUMBIA
UNIVERSITY**

Morningside Campus
535 W. 116th Street
313 Low Memorial Library
New York, NY 10027

Medical Center Campus
701 W. 168th Street
314 Hammer Building
Phone: 212-305-0880

evpr.columbia.edu

Office of the Executive Vice President for Research **Holiday Party**

Photo Credit: Logan Gray

